



<http://www.euroedr.net>

Past workshops : <http://www.euroedr.net/workshops/past>

**“ DATA MODELLING AND MODEL DRIVEN IMPLEMENTATION
OF DATA DISTRIBUTION ”**

“NMCA'S GETTING ACTIVELY INVOLVED IN LINKED DATA!”

Spatial referencing framework for the **web of **data** : *developments* at **IGN****

Geodata on the Web

Amersfoort, february 10th, 2016

Bénédicte Bucher, IGN, Research in GI Science

France

A COLLABORATIVE RESEARCH PROJECT WITH COMPUTER SCIENTISTS

■ THE DATALIFT PROJECT (FRENCH, 2010-2013)



- **Designing a platform to facilitate the conversion of structured content to linked data format and publication**

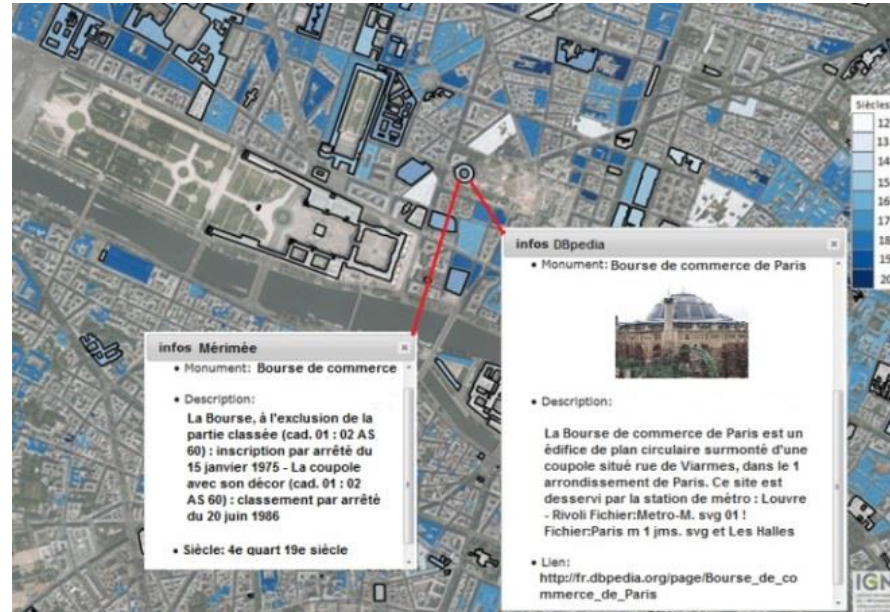
■ IGN'S MOTIVATIONS TO PARTICIPATE

- **To study how to address new needs emerging with the web of data**
- **To apply web data technologies to well known issues in SDIs : reusing data in a context far from their production, discovering relevant data**
- **NB : A preliminary step was required before**

- RESSOURCES CONTRIBUTING TO A SPATIAL REFERENCING FRAMEWORK FOR THE WEB OF DATA :
 - **direct referencing : coordinates**
 - **Coordinate systems** <http://data.ign.fr/def/ignf>, <http://data.ign.fr/id/ignf/crs/RGF93G>
 - **Geometries**
 - **Specific hasGeometry property : to connect a thing to a spatial feature**
 - **indirect referencing :**
 - **features that are used to indicate a location**
<http://data.ign.fr/id/geofla/departement/51>,
- IDENTIFICATION OF SCIENTIFIC ISSUES : → A Feliachi PhD thesis

SOME EXPLOITATION OF RESULTS

- USING TOPOGRAPHIC FEATURES TO FACILITATE INTERCONNECTION BETWEEN OPEN DATA



Feliachi, Abadie, Hamdi 2013

- AND TO FACILITATE RENDERING AT DIFFERENT SCALES



Factors of success during Datalift project

- **COLLABORATIVE DESIGN OF A SOLUTION BETWEEN WEB SCIENTISTS AND GI SCIENTISTS : A PLATFORM THAT HANDLES SPATIAL AS A SPECIAL INFORMATION (VOCABULARIES, CONVERSION MECHANISM, MEDIATION, ..)**
- **OPPORTUNITY TO RECRUIT STUDENTS WITH THE GOOD PROFILE (RDF AND GIS)**
- **CORE SET OF RESEARCHERS WHO ACTIVELY FOLLOW RELEVANT COMMUNITIES WHERE KNOWLEDGE AND GOOD PRACTICES ARE BUILT**
- **DEDICATION OF AN INDUSTRIAL PARTNER TO INTEGRATE CONTRIBUTIONS IN A SOFTWARE PLATFORM**

1. BE VERY CAREFUL WITH COMMUNICATION.

→ *Tomorrow early session : what is a common ground and on what do we agree to disagree*

- **IT IS NOT CLEAR WHO HAS THE RIGHT TO SUGGEST OR VALIDATE AN EVOLUTION OF A PROTOCOLE , OF A GOOD PRACTICE, OF A SHARED RESOURCE (“if it is good users will adopt it” ?)**

- IT IS DIFFICULT TO EVALUATE A PROGRESS IN SEMANTIC WEB TECHNOLOGIES (a scientific contribution)
→ *EUROSDR initiative to design applied data challenges*



INSTITUT NATIONAL
DE L'INFORMATION
GÉOGRAPHIQUE
ET FORESTIÈRE

THANK YOU FOR YOUR ATTENTION

Benedicte.bucher@ign.fr